

ABOUT GRONDIN CONSTRUCTION, INC.

fact

Established in 1997, Grondin Construction, Inc. is trained and certified by the California Department of Public Health in lead abatement and stabilization procedures.

Working with many community organizations, Grondin Construction is dedicated to eradicating lead in homes for a safer living environment.



fact

Peeling, chipping, chalking, or cracking lead-based paint is a hazard and needs immediate professional attention.

CONTACT US

For more information,
contact Grondin Construction, Inc.

9235 Trade Place, Suite G
San Diego, CA 92126

Phone: (858) 549-1682

Fax: (858) 549-1692

www.grondinconstructioninc.com



REALTORS

HOW THE 2010 LEAD LAW EFFECTS YOU

According to the Environmental Protection Agency (EPA), it is crucial for realtors to understand the lead removal regulation.

- Working with **SELLERS**: Make sure that the sellers are complying with the law and making appropriate and safe improvements to their home.
- Working with **BUYERS**: The buyers must be disclosed of the potential dangers of lead in homes built before 1978, and of the law so they can have it properly removed.

Pre-1978 Homes



GRONDIN CONSTRUCTION, INC.

Licensed and Insured
General Contractor #741287

Improving communities
one home at a time...

SAFE LEAD REMOVAL INFORMATION



LEAD ABATEMENT AND STABILIZATION GENERAL CONTRACTOR

9235 Trade Place, Suite G
San Diego, CA 92126

Phone: (858) 549-1682

Fax: (858) 549-1692

www.grondinconstructioninc.com

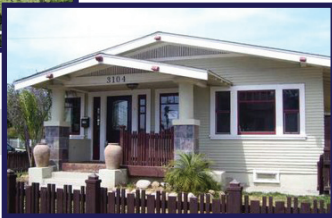
ABOUT LEAD

WHAT IS LEAD?

Lead is a toxic base in paint used in homes built before 1978. It is important that lead be removed safely by a licensed professional for the safety of home occupants.



OLDER HOMES



fact

60% of lead-caused health problems are due to unsafe lead removal practices.

SAFE LEAD PRACTICES



REMINDER

GRONDIN CONSTRUCTION, INC.

REMINDS YOU OF THE

2010 LEAD LAW

As of April 22, 2010, contractors doing renovation, repair and painting projects that disturb lead-based paint in homes, child care facilities, and schools built before 1978 must be certified. Specific work practices must be followed to prevent lead poisoning and contamination.



UNSAFE!



SAFE

fact

Attempting to do uncontained lead removal on your own can be dangerous and cause lead to spread throughout your home unseen.

fact

High Risk Lead Areas include:

- Windows and window sills.
- Doors and door frames.
- Stairs, railings, and banisters.
- Porches and fences.

LEAD HAZARDS

How people get lead in their bodies:

- Breathe in lead dust, especially during renovations that disturb painted surfaces.
- Put their hands or objects covered with lead dust in their mouths.
- Eat paint chips or soil that contains lead.

Lead is more dangerous to children:

- Babies and young children often put their hands and objects in their mouths, and these can have lead dust on them.
- Children's growing bodies absorb more lead, and their brains and nervous systems are more susceptible to lead.

If not detected early, children with high levels of lead in their bodies can suffer from:

- Slowed growth
- Hearing problems and headaches
- Brain and nervous system damage
- Behavior and learning problems, such as hyperactivity

Adults can suffer from:

- Reproductive problems
- High blood pressure and hypertension
- Nerve disorders
- Memory and concentration problems
- Muscle and joint pain